

# Instructions for use English

## E-Safe Spezial (CH)

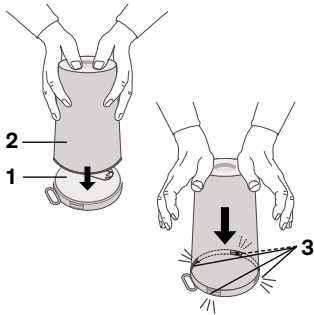
## E-Safe Spezial A (EU)

Intended use: Disposal container for sharp and pointed objects

**Waste container**  
1.6/2.0/3.1 litre

### Cover assembly

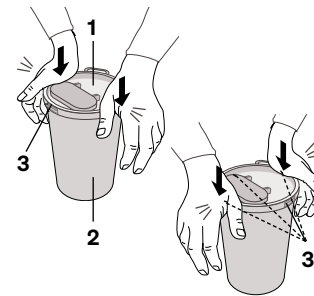
#### Variant 1



Place the lid (1) on a stable surface and place the container (2) with the opening on the lid.

Press firmly on the bottom of the container to connect it to the lid until all locking tabs (3) are visibly and audibly engaged.

#### Variant 2

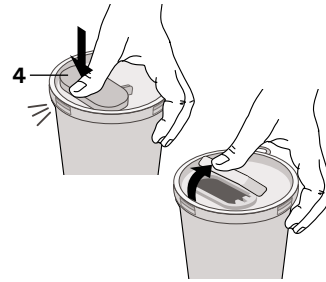


The lid (1) is placed on the container (2). By applying strong pressure at the level of the opposing locking tabs (3) ...

... the lid is connected to the container. All locking tabs (3) must be visibly and audibly locked into place.

### Lid closure

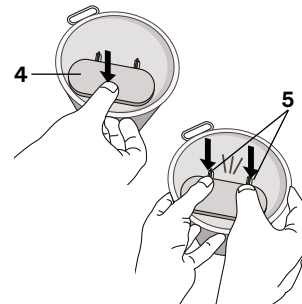
#### Temporary closure



The lid flap (4) can be closed with one hand by applying light pressure.

The lid flap can also be easily opened again with one hand.

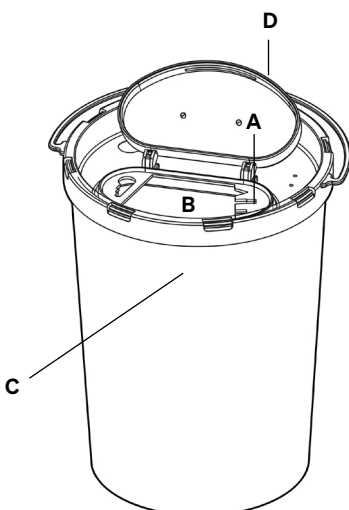
#### End cap



Once completely filled, the lid of the discharge opening is sealed shut. Close the flap (4) with light pressure ...

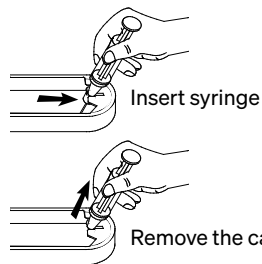
... then press down firmly with both hands at the hinges (5) until you hear it click into place. The securely closed container can now be disposed of.

### Application



#### A) Removal device for cannulas:

Different removal notches enable easy removal of cannulas.



Insert syringe

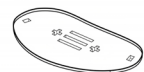
Remove the cannula

#### B) Drop opening:

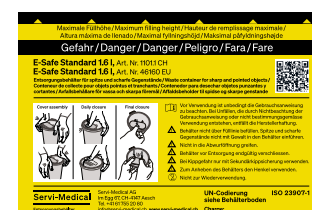
The generously sized opening also allows bulky items such as butterfly needles to be disposed of safely.

#### D) Autoclave sieve:

(sold separately) is securely stored in the drop lid via clamping lugs before use.



#### C) Fill level label:



Warning notices on the reverse side →

## Applies to the following E-Safe products

Item No. CH	Item No. EU	Container ID No.	Lid ID No.	Maximum gross weight in kilograms
1101.2	46161	1.6 l - yellow 0045/0046	transparent 0370/0371	0.3
1102.1	46201	2.0 l - yellow 0051	transparent 0370/0371	0.4
1103.1	46301	3.1 l - yellow 0065/0066	transparent 0370/0371	0.6

## Intended use

E-Safe products are intended exclusively for the disposal of needles, syringes, scalpels and broken glass from the medical sector (hazardous solid materials in packaging groups II or III). Any other use is not in accordance with the intended purpose.

## General description

E-Safe products are made of polypropylene, are tested in accordance with ISO 23907-1 and have UN approval. Manufacturing data: The month/year and identification number are printed on every E-Safe container and lid for batch traceability.








## Absorbent material, disposal and labelling

Before disposal, full E-Safe products must be checked for specific or non-specific hazardous substances and labelled by a responsible person according to their degree of hazard. Before sealing, check whether they contain any liquids. If liquids are present, the user must add a sufficient amount of absorbent material to the E-Safe products. Disposal must be carried out in accordance with the applicable legal provisions.

## Note

We reserve the right to make technical changes to the illustrations and information in these operating instructions that are necessary to improve the products.

## Safety instructions

-  It is essential to read the instructions for use before use. The manufacturer accepts no liability for accidents caused by failure to follow the instructions for use or improper use.
-  Do not fill the container above the fill line. Do not force sharp or pointed objects into the container.
-  Do not reach into the chute.
-  Seal container tightly before disposal.
-  If there is a risk of tipping, only use with secondary anti-tip protection.
-  Use the handle to lift the container.
-  Not for reuse.

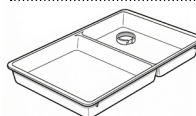
## Accessories

You will receive separate instructions for use for the following items.



### Movix adhesive adapter

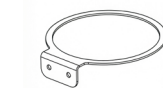
<b>for containers</b> 0.5 l - 0.6 l	<b>for containers</b> 0.5 l - 3.1 l
<b>Item No. CH: 1154</b>	<b>Item No. CH: 1155</b>
<b>Item No. EU: 46002</b>	<b>Item No. EU: 46003</b>



### Plateau pour seringues E-Tray

without bayonet lock and with bayonet lock for small and large containers

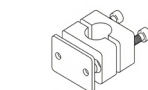
without bayonet fitting	for small containers	for small and large containers
	0.5 l - 0.6 l	0.5 l - 3.1 l
<b>Item No. CH: 1158</b>	<b>Item No. CH: 1152.KL.</b>	<b>Item No. CH: 1152</b>
<b>Item No. EU: 45000</b>	<b>Item No. EU: 45041</b>	<b>Item No. EU: 45101</b>



### Holder for containers

Mounting on wall, trolley or adapte

<b>for containers</b> 0.5 l - 0.6 l	<b>for containers</b> 1.6 l - 3.1 l
<b>Item No. CH: 1149</b>	<b>Item No. CH: 1150</b>
<b>Item No. EU: 45005</b>	<b>Item No. EU: 45010</b>



### Adapter

for attachment to the infusion stand

<b>pipe Ø 20 mm</b>	<b>pipe Ø 25 mm</b>
<b>Item No. CH: 1387</b>	<b>Item No. CH: 1388</b>
<b>Item No. EU: 45020</b>	<b>Item No. EU: 45025</b>



### Autoclave filter for E-Safe special container

<b>Item No. CH: 1156</b>
<b>Item No. EU: 45009</b>

